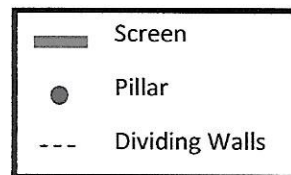
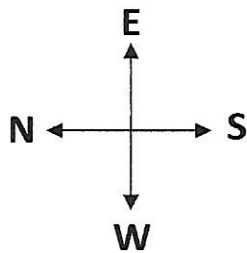
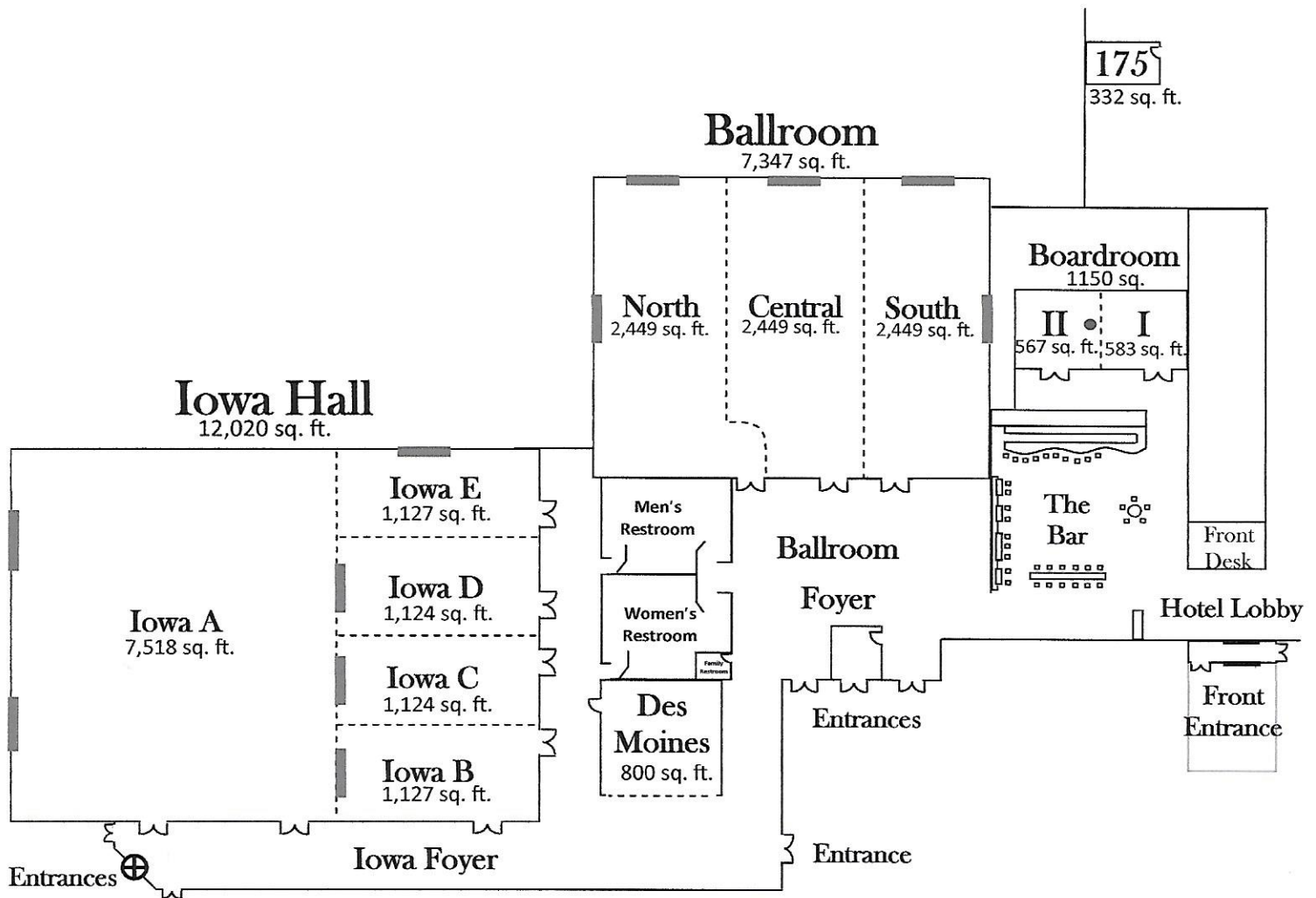
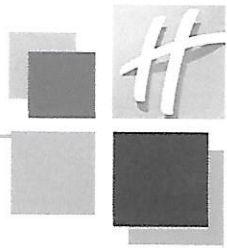
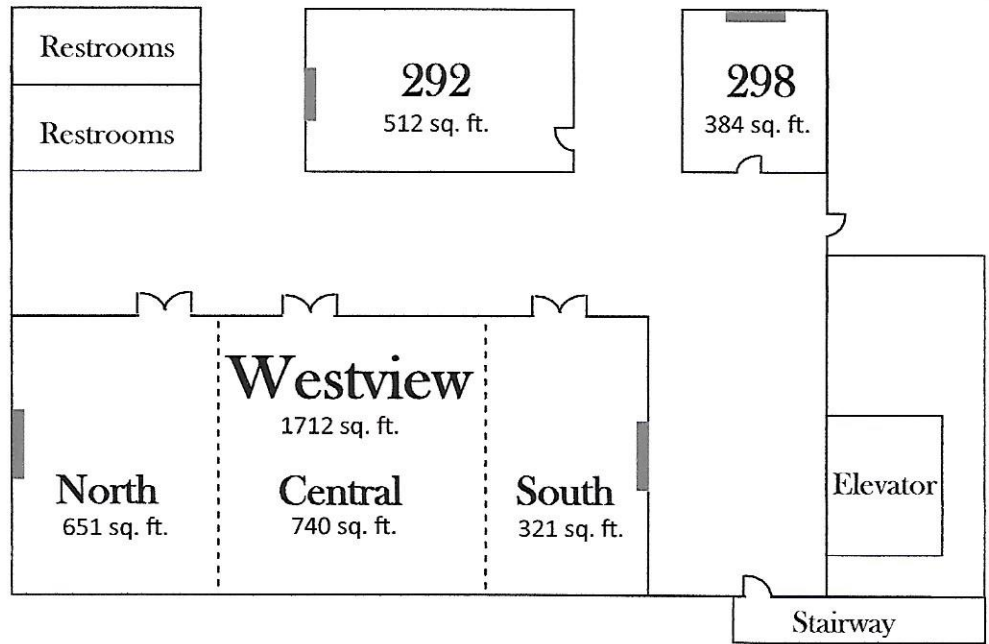
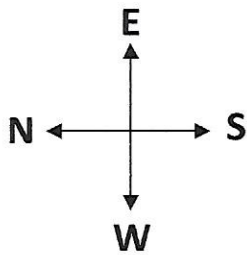
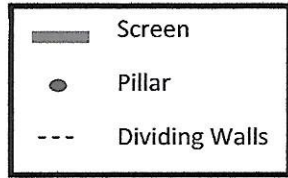
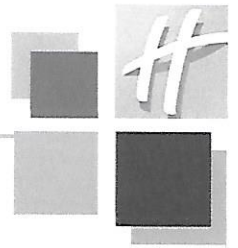


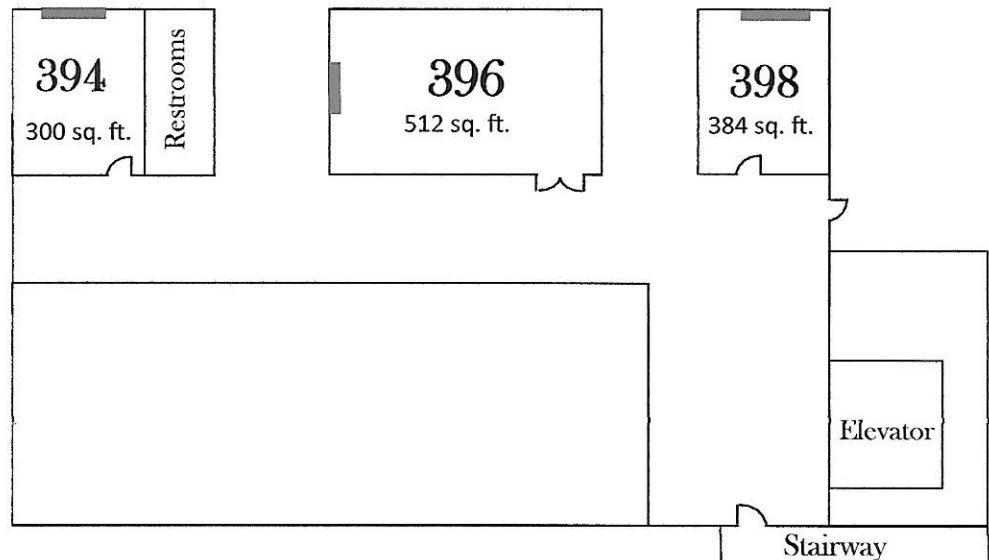
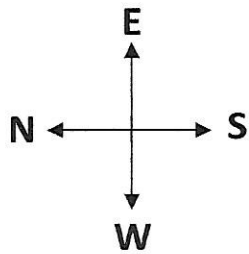
First Floor Meeting Rooms



Second Floor Meeting Rooms



Third Floor Meeting Rooms



Banquet & Meeting Rooms

Rooms	Square Feet	Theater Style	Banquet	Classroom (4 per)	
Iowa Hall (A, B, C, D, E)	12,020'	1,500	1,000	840	
	77—8'x10' Booths or 91—6'x10' Booths				
Iowa A	7,518'	900	580	448	
	49—8'x10' Booths or 56—6'x10' Booths				
Iowa B	1,127'	120	80	56	
Iowa C					
Iowa D					
Iowa E					
Ballroom (North, Central, South)	7,449'	950	528	540	
Ballroom North	2,449'	300	144	180	
Ballroom Central			136	172	
Ballroom South			144	180	
Des Moines	800'	90	40	32	
Westview (North, Central, South)	1,712'	220	104	112	
	Westview North	651'	70	40	36
	Westview Central	740'	80	40	36
	Westview South	321'	20	16	12
Boardroom (I & II)	1,150'	100	72	52	
Boardroom I	583'	45	40	26	
Boardroom II	567'	45	32	26	
Courtyard	6,000'		480		
	46—6' x 10' Booths				
Room 292	512'	50	32	28	
Room 298	384'	42	24	16	
Room 396	512'	50	32	32	
Room 398	384'	42	24	16	
Room 175	332'	Conference Room for 10			
Room 394	300'	Conference Room for 14			

These numbers are based on a stage or podium in the room & set to "comfort max"

We also have suites and parlor rooms for small meetings or hospitality rooms.

Airport Holiday Inn • 6111 Fleur Drive • Des Moines, IA 50321

(800) 248-4013 • (515) 287-2400 • www.holidayinn.com/dsm-airport

